

Meeting: Delegated Decisions by the Executive Member for Community Services on Traffic Regulation Orders
Date: 25 August 2015
Subject: Etonbury Academy, Stotfold Road, Arlesey – Consider Representations to Proposed Waiting Restrictions
Report of: Paul Mason, Head of Highways
Summary: This report seeks the approval of the Executive Member for Community Services for the implementation of waiting restrictions outside Etonbury Academy, Stotfold Road, Arlesey

Contact Officer: Nick Chapman
nick.chapman@amey.co.uk
Public/Exempt: Public
Wards Affected: Arlesey
Function of: Council

CORPORATE IMPLICATIONS

Council Priorities:

The proposal will improve road safety by better managing parking outside Etonbury Academy.

Financial:

These works are being funded from Section 106 monies.

Legal:

None from this report

Risk Management:

None from this report

Staffing (including Trades Unions):

None from this report

Equalities/Human Rights:

None from this report

Community Safety:

The proposal will improve road safety for all road users.

Sustainability:

None from this report

RECOMMENDATION(S):

- 1. That the proposal to introduce No Stopping on School Entrance Markings Monday to Friday 8am to 4.30pm outside Etonbury Academy be implemented as published.**
- 2. That the proposal to introduce No Waiting at any time outside Etonbury Academy be implemented as published.**

Background and Information

1. There have been long standing issues with parking outside the school, both on the road itself and in the school lay-by. There are already yellow lines in place, but these are not fully compliant with current Regulations and are not supported by the required legal order.
2. The proposals are intended to improve road safety outside Etonbury Academy. The proposed measures include adjustments to the no stopping on school entrance markings to ensure that they cover the appropriate length of road and that they are legally correct. There are already double yellow lines in the lay-by outside the school, which is not highway, but they are not supported by a traffic regulation order (TRO). A TRO is being promoted to enable the restrictions to be enforced and the school has agreed to this as it is their land.
3. The proposals were formally advertised by public notice in June 2015. Consultations were carried out with the emergency services and other statutory bodies, Arlesey Town Council and the Ward Members. Public notices were displayed on street.

Representations and Responses

4. One written representation has been received, which was from Arlesey Town Council and wish to object to the Order until alternative parking arrangements are made at drop off and pick up times as they don't feel it will solve the parking problem at the school.

5. Central Bedfordshire Highways' response to the objection is as follows:-

The restrictions are already in place, so the proposals are unlikely to bring about a significant change in parking practices outside the school. However, by ensuring that the restrictions have the correct legal backing will ensure that effective enforcement can take place. This will tackle parking by those who choose to ignore the existing yellow lines and park in a hazardous manner outside the school gate.

There is space for parents to park in Stotfold Road, but not immediately outside the school. Then provision of off-road parking is not a priority for Council funding. Even if such parking was provided, there would still be a need to manage parking outside the school.

6. Bedfordshire Police has raised no objections to the proposals.

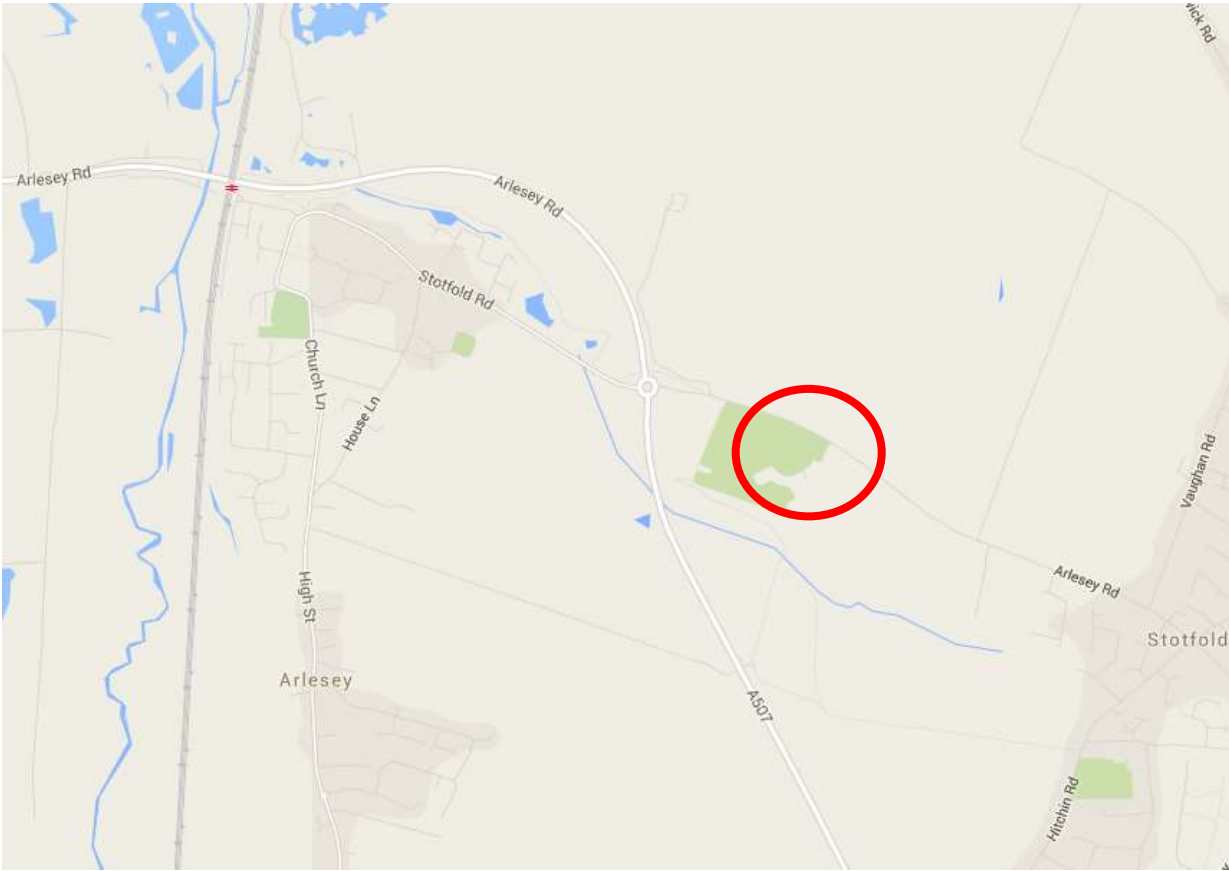
Conclusion

7. The proposals are supported by Etonbury Academy as they wish to support better management of parking outside the school. The proposals will not have a significant impact on parking activity outside the school, but they will enable enforcement of the restrictions to take place. Therefore, it is recommended that the proposed waiting restriction proposals be implemented as published.
8. If the approved the works are expected to take place within the current financial year.

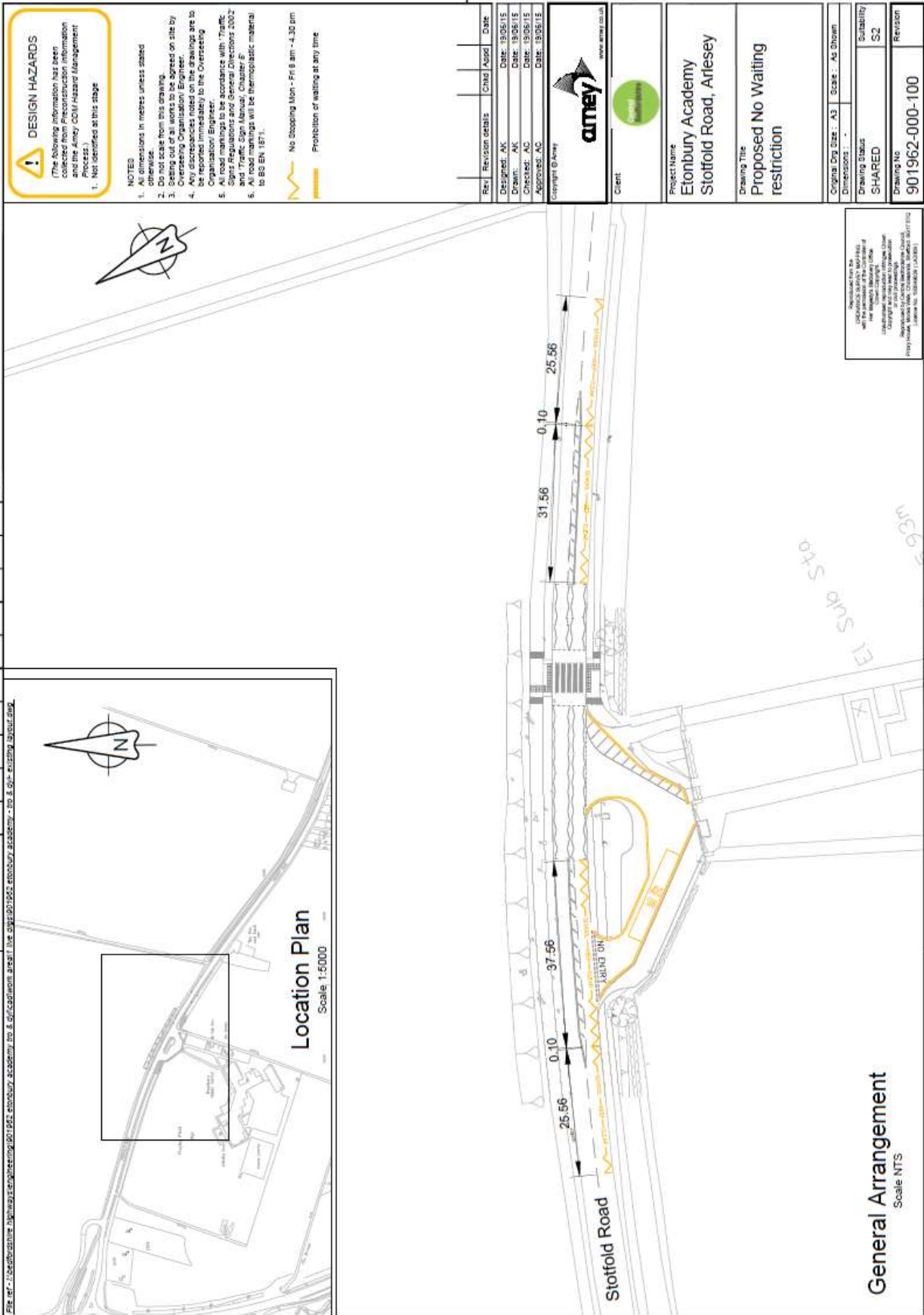
Appendices:

Appendix A – Location plan
Appendix B – Drawing of Proposals
Appendix C – Public Notice of Proposals
Appendix D – Representations

Appendix A



Appendix B





PUBLIC NOTICE

CENTRAL BEDFORDSHIRE COUNCIL PROPOSES TO INTRODUCE NO STOPPING ON SCHOOL ENTRANCE MARKINGS NEAR ETONBURY ACADEMY, STOTFOLD ROAD, ARLESEY

Reason for proposal: The proposed Order is considered necessary for facilitating the passage of traffic on the road and for preserving or improving the amenity of the area through which the road runs. The restrictions are intended to address indiscriminate parking adjacent to the school entrance during the school day. The double yellow lines are already in place but it is proposed to include them in a legal order to make them enforceable. The school entrance marking restriction is already in place, but it is proposed to amend the length and configuration of them.

Effect of the Order:

To introduce No Waiting at any time on the following lengths of road in Arlesey:-

1. Etonbury Academy layby adjacent to Stotfold Road, both sides, for its full extent.

To introduce No Stopping Monday to Friday from 8.00am to 4.30pm on School Entrance Markings on the following lengths of road in Arlesey:-

1. Stotfold Road, south-west side, from a point approximately 30 metres south-east of the north-western end of the Etonbury Academy layby extending in a north-westerly direction for approximately 63 metres.
2. Stotfold Road, south-west side, from a point approximately 24 metres south-east of the south-eastern end of the Etonbury Academy layby extending in a south-easterly direction for approximately 57 metres.

Further Details may be examined during normal office hours at the address shown below, viewed online at www.centralbedfordshire.gov.uk/publicstatutorynotices or tel. 0845 3656116.

Comments should be sent in writing to the Transportation Manager, Central Bedfordshire Highways, Woodlands Annexe, Manton Lane, Bedford MK41 7NU or e-mail centralbedsconsultation@amey.co.uk by 21 July 2015. Any objections must state the grounds on which they are made.

Order Title: If made will be "Central Bedfordshire Council (Bedfordshire County Council (District of Mid Bedfordshire) (Civil Enforcement Area and Special Enforcement Area) (Waiting Restrictions and Street Parking Places) (Consolidation) Order 2008) (Variation No. *) Order 201*"

Central Bedfordshire Council
Priory House
Chicksands
Shefford SG17 5TQ

Marcel Coiffait
Director of Community Services

26 June 2015

Appendix D

Arlesey Town Council considered the No Stopping on School Entrance Markings near Etonbury School at their meeting on Tuesday 7 July 2015 and they wish to object to the Order until alternative parking arrangements are made at drop off and pick up times as they don't feel it will solve the parking problem at the school.
